

## THE TOWN OF HEDON

Hedon was founded in c.1140 and soon became a port of national importance.

It was a royal mint town in the reign of King Stephen and obtained its first charter from Henry II.

The burgesses had their rights and privileges confirmed by King John in 1200.

## THE MUSEUM SHOP



The shop sells a selection of books, booklets, postcards and gifts relating to the town of Hedon, together with items for children.



The Borough of Hedon seal, 1598

## HEDON MUSEUM

*Staffed entirely by volunteers.*

Why not help us to run the Museum?  
New volunteers welcomed.  
To join, enquire at the Museum shop.

**OPEN EVERY  
WEDNESDAY & SATURDAY**

10.00 a.m. - 4.00 p.m.

Find us behind the Town Hall,  
St Augustine's Gate, Hedon.

Telephone: 01482 890908

**SCHOOL PARTIES AND  
PRIVATE GROUPS  
WELCOMED BY ARRANGEMENT**

Hedon Museum is a Registered Charity - No. 700809

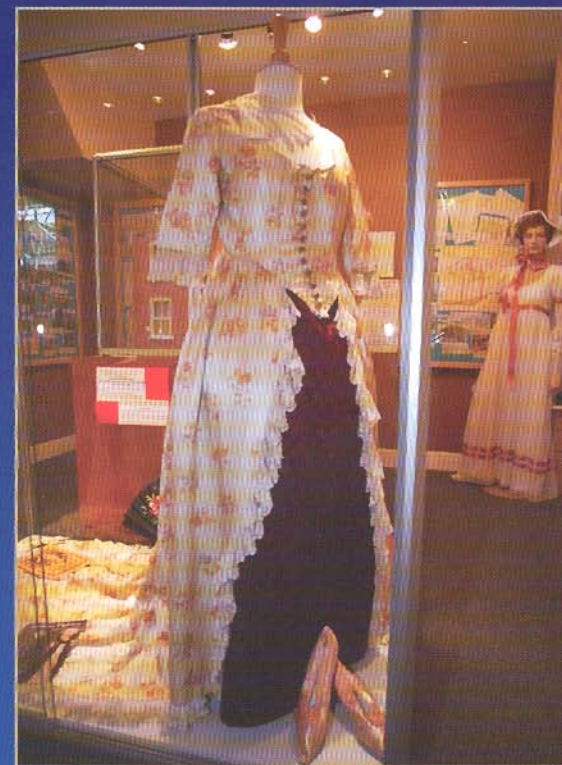
This leaflet is sponsored by:



**EAST RIDING**  
OF YORKSHIRE COUNCIL

# HEDON MUSEUM

**ADMISSION FREE**



Preserving and displaying  
the social history of the  
Town of Hedon  
and South Holderness  
in the East Riding of Yorkshire



## THE HEDON ROOM



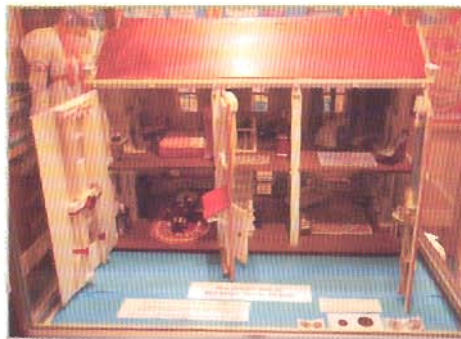
Aspects of the history of the Town displayed, including the Ancient Haven, civic life, trades, public houses, wartime experiences, education and much more.



*The Pingsdorf Pitcher*  
12th Century, from the Rhineland, found in Hedon.  
A 'marvellous and rare' complete vessel, proving Hedon's continental trade.

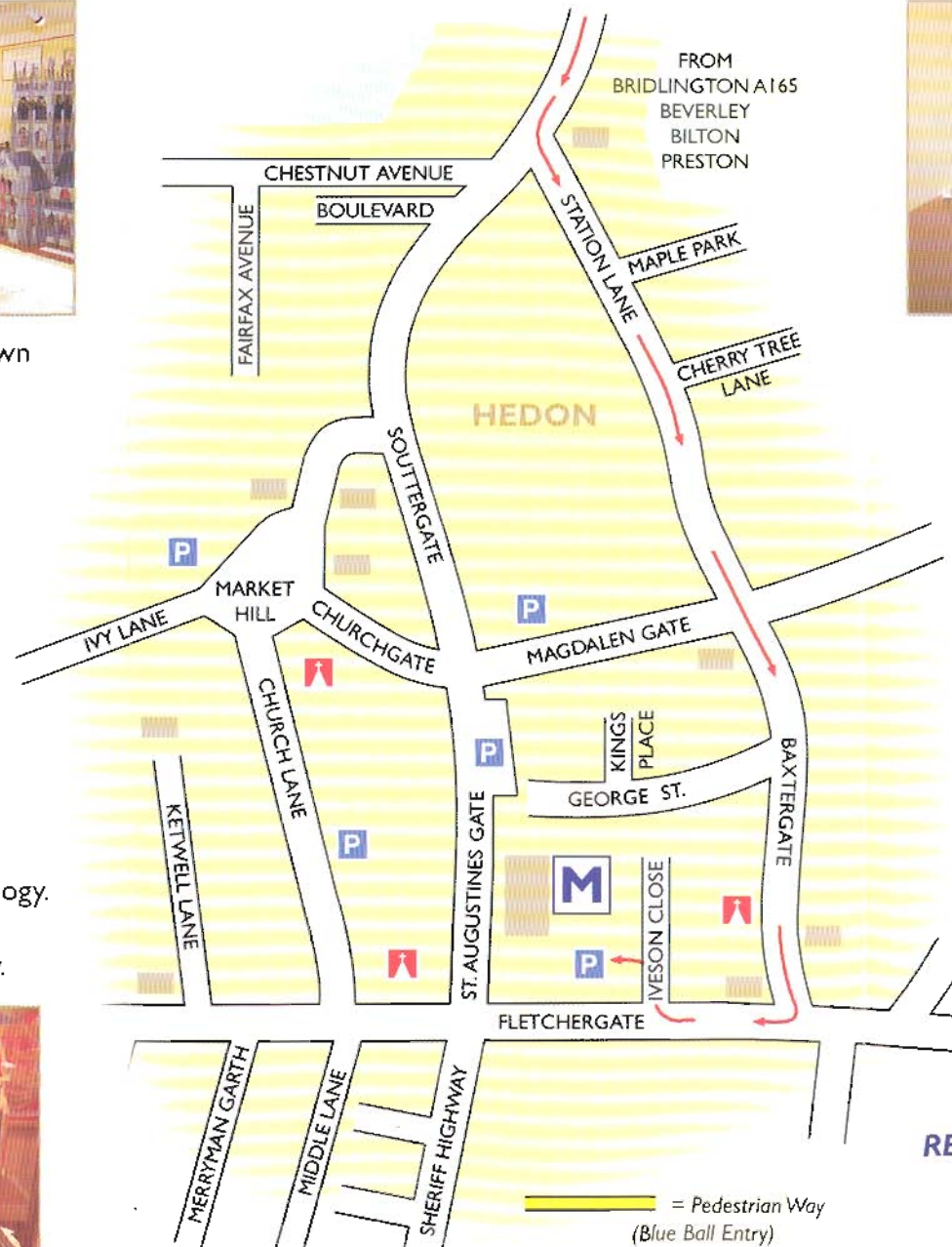
## THE SMALL ROOM

Changing displays on specialist themes, collections and archaeology. The museum is a recognized depository for local archaeology.



Scale model of 18c Magdalen House ▲  
furnished in period style

## HOW TO FIND US



## HEDON MUSEUM

Is situated behind the Town Hall of the historic town of Hedon  
Approach via Iveson Close car park-direction boards are in place on open days.

## UPSTAIRS GALLERY



Exhibitions change frequently throughout the year, displaying paintings, photography, local crafts, artefacts and documents.

## FAMILY HISTORY & ARCHIVE ACCESS



Census returns and IGI Baptism, Marriages and Burials on microfiche. Internet access.

**REFRESHMENTS ARE AVAILABLE**  
*in the Upstairs Gallery.*

The Museum displays  
**RECENT ACQUISITIONS**  
in a case in the Hedon Room.